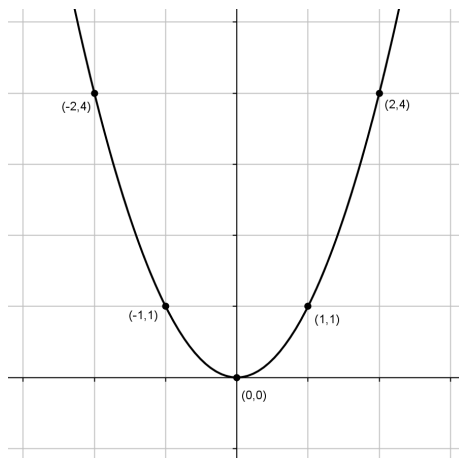
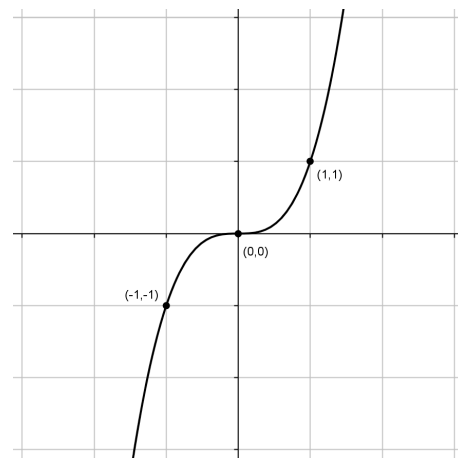


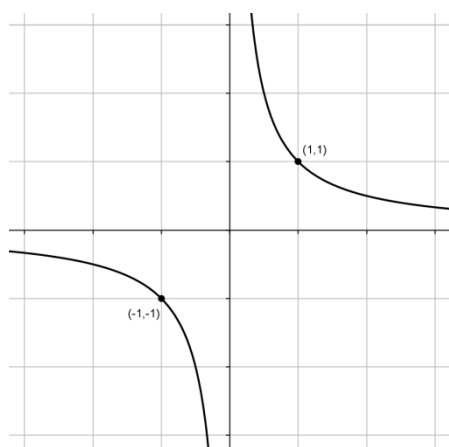
**Identity Function:**  $f(x) = x$



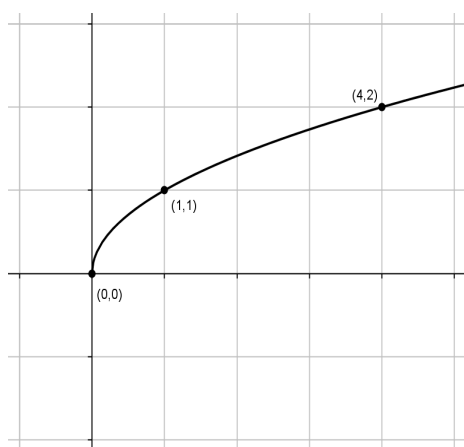
**Square Function:**  $f(x) = x^2$



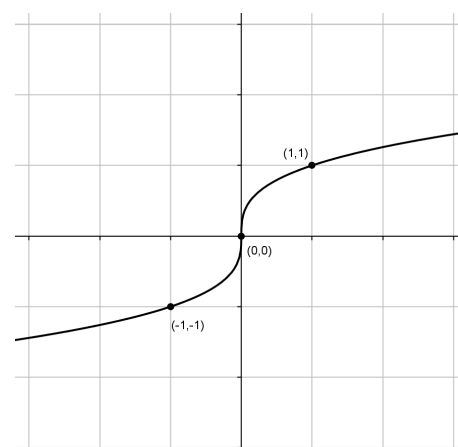
**Cube Function:**  $f(x) = x^3$



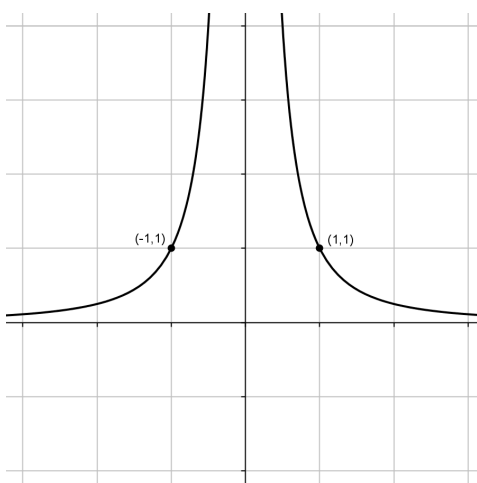
**Reciprocal Function :**  $f(x) = \frac{1}{x}$



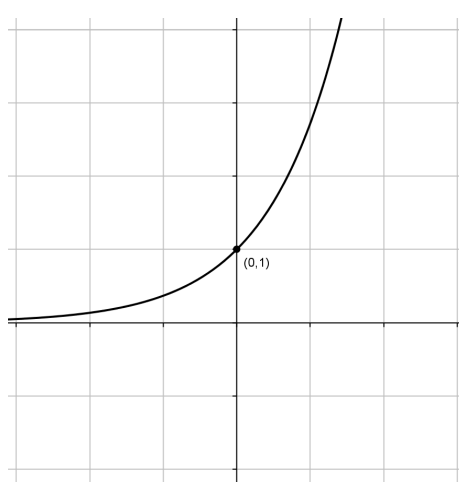
**Square Root Function:**  $f(x) = \sqrt{x}$



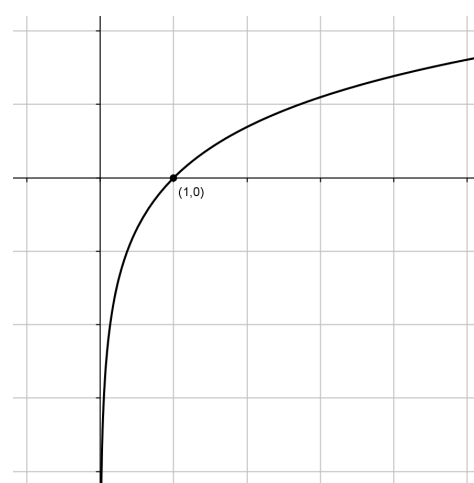
**Cube Root Function:**  $f(x) = \sqrt[3]{x}$



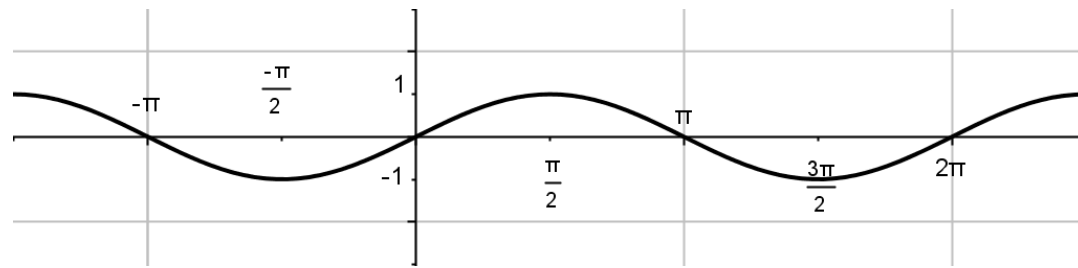
$f(x) = \frac{1}{x^2}$



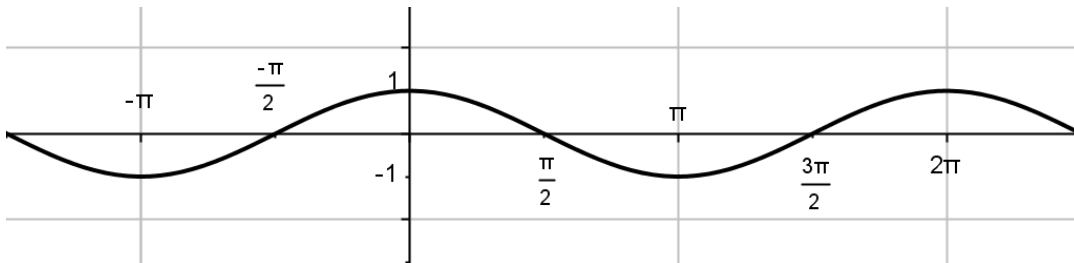
**Exponential Function:**  $f(x) = e^x$



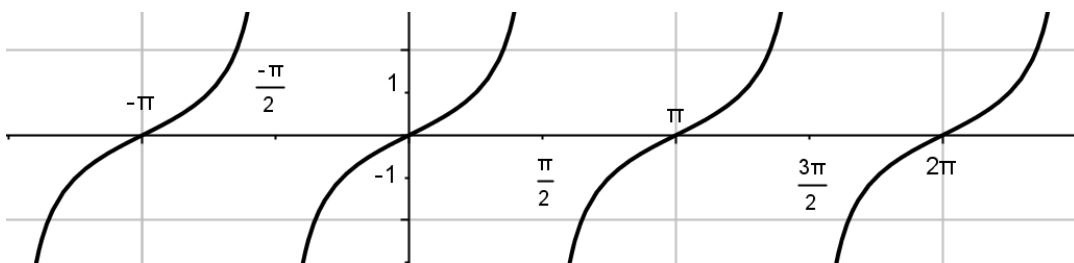
**Natural Logarithm Function:**  $f(x) = \ln(x)$



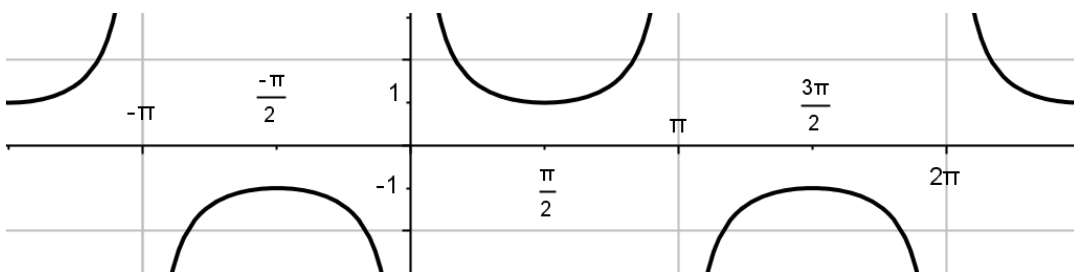
**Sine Function**  
 $f(x) = \sin(x)$



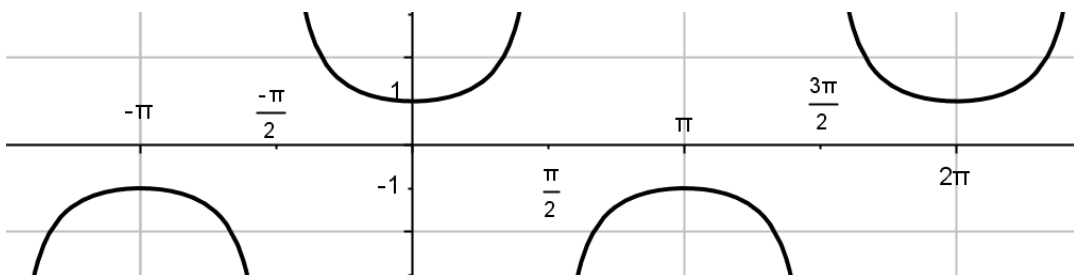
**Cosine Function**  
 $f(x) = \cos(x)$



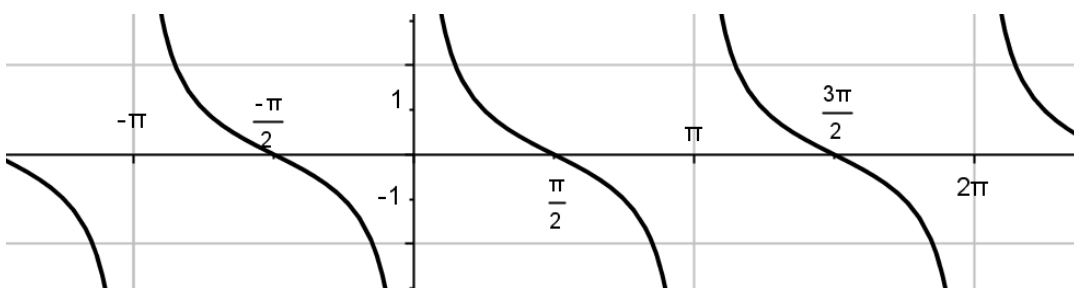
**Tangent Function**  
 $f(x) = \tan(x)$



**Cosecant Function**  
 $f(x) = \csc(x)$



**Secant Function**  
 $f(x) = \sec(x)$



**Cotangent Function**  
 $f(x) = \cot(x)$